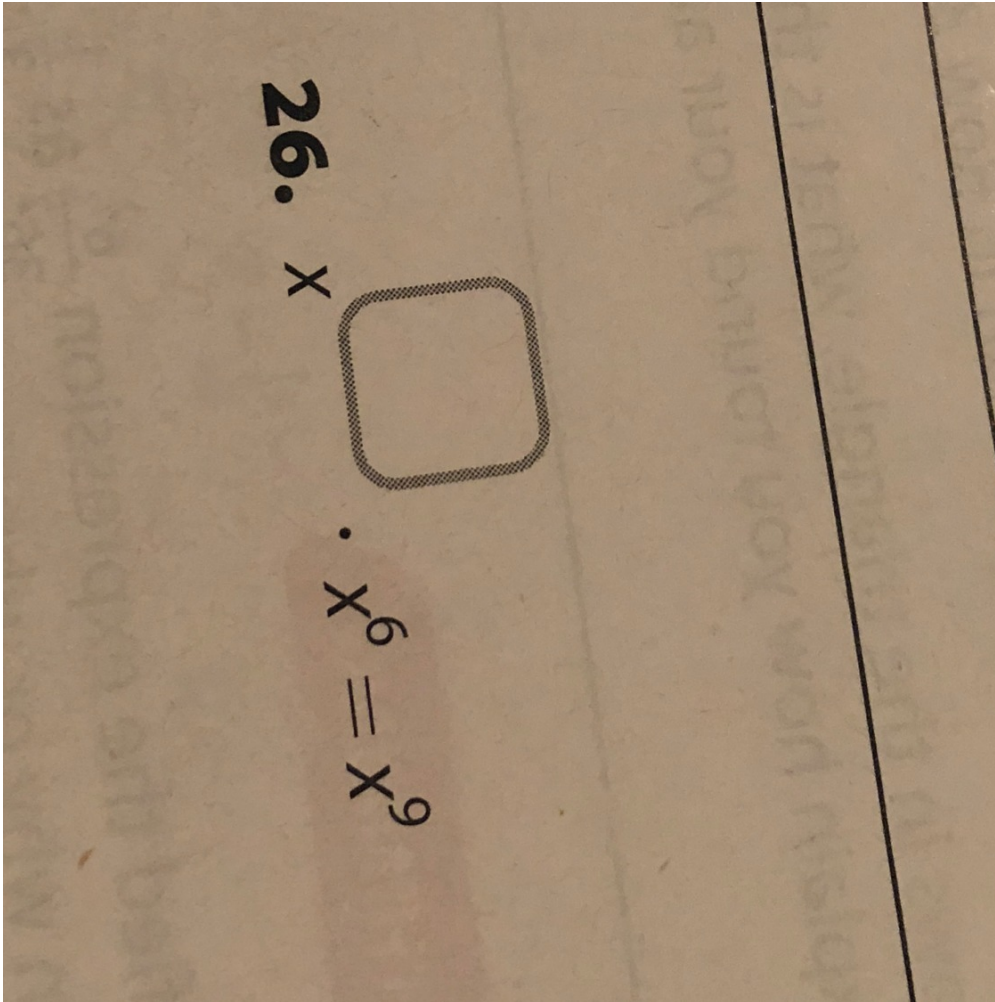


**Hi my math teacher makes my life impossible and I have no clue how to do this thanks!**



**Answer 1**

Answer: the answer is  $x^3$  (when you have product of powers you just add them.).

**Answer 2**

Answer:

**Answer:**

$x^3$ , because when you have the powers (in  $x^6$ , the "6" is the power) then you add the powers.  $x^3 + x^6 = x^9$ . So your answer is  $x^3$ .

**Step-by-step explanation:**

[MATHEMATICS](#) [MIDDLE SCHOOL](#)

1. [Home](#)
2. [hi-my-math-teacher-makes-my-life-impossible-and-i-have-no-clue-how-to-do-this-thanks](#)